

Costa Magna



SPECIFICATIONS

Length: 44.50m (146')
Beam: 7.30m (24')
Draft: 2.80m (9')
Builder: Proteksan
Fuel consumption: 350 litres/hour

Cruising speed: 12 knots
Maximum speed: 14 knots

ACCOMMODATION

5 cabins : 3 doubles, 2 twins (1 twin cabin has an upper and lower berth and no ensuite bathroom - ideal for children)

EQUIPMENT

Each cabin is equipped with TV and DVD.

Air conditioning: Yes

WATER SPORTS

-2 x Novamarine RH 450 tenders 110hp
-2 x Yamaha 800R waverunners 130hp
-snorkelling gear
-donuts
-kayaks
-waterskis
-surf-ski

Costa Magna

[View image slideshow](#)



SPECIFICATIONS

Length: 44.50m (146')
Beam: 7.30m (24')
Draft: 2.80m (9')
Builder: Proteksan
Fuel consumption: 350 litres/hour

Cruising speed: 12 knots
Maximum speed: 14 knots

ACCOMMODATION

5 cabins : 3 doubles, 2 twins (1 twin cabin has an upper and lower berth and no ensuite bathroom - ideal for children)

EQUIPMENT

Each cabin is equipped with TV and DVD.

Air conditioning: Yes

WATER SPORTS

-2 x Novamarine RH 450 tenders 110hp
-2 x Yamaha 800R waverunners 130hp
-snorkelling gear
-donuts
-kayaks
-waterskis
-surf-ski

Costa Magna offers extraordinary volume in a refined atmosphere.

Her interior is a harmonious blend of mahogany wood furniture, giving a feeling of warm luxury and charm.

Guests will appreciate Costa Magna's abundant deck space. There is ample space to sunbath on the flybridge or enjoy an al fresco cocktail on the aft or upper deck, which provides an ideal area for relaxation and entertainment.

The beautiful staterooms are designed for maximum pleasure and quality of life, providing the intimacy to relax in private.

The Captain and crew are ready to welcome you onboard!



Exterior 1



Exterior 2



Exterior 3



Exterior 4



Aft deck



Aft deck



Upper deck



Upper deck dining



Sky lounge



Sundeck



Main saloon



Dining area



Master suite



Master suite - ensuite facilities



VIP suite



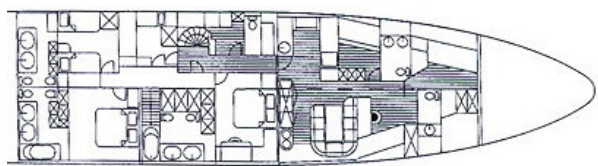
VIP suite



Twin cabin

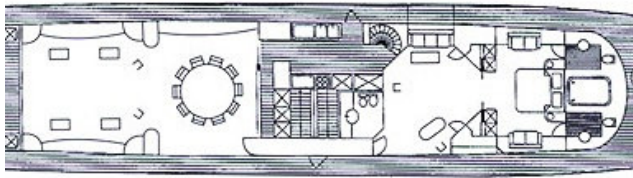


Twin cabin

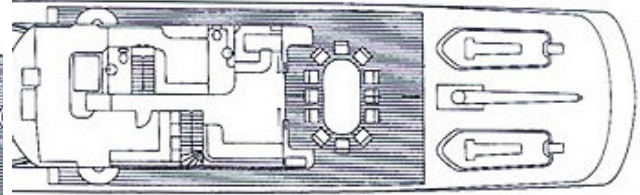


Layout - Lower Deck

VIP - ensuite facilities



Layout - Main Deck



Layout - Upper Deck

This document is not contractual. All specifications are given in good faith and offered for informational purposes only. The publisher and company does not warrant or assume any legal liability or responsibility for the accuracy, completeness, or usefulness of any information and/or images displayed. Yacht inventory, specifications and charter prices are subject to change without prior notice. None of the text and/or images used in this brochure maybe reproduced without written consent from the publisher

COSTA MAGNA – 44.50m

Charter rate: high season: 96,000 Euros per week, VAT exempt + expenses
low season: 90,000 Euros per week, VAT exempt + expenses

PER PRENOTAZIONI : info@yachtexcellence.it